

Matuta 10

UV/Vis Spectrophotometer

HIGH STABILITY, COST SAVING

Engineered to offer consistent and reliable results at an unbeatable price, **Matuta 10** single-beam ultraviolet-visible spectrophotometer covering spectral range from 190nm to 1100nm fits the needs of your laboratory. Thanks to its stable light sources and the precision-made optical system, **Matuta 10** gives high wavelength and photometric accuracy. To optimize cost efficiency, the system allows you to deactivate lamps selectively when focusing on either UV or visible region for analysis.

By connecting to computer through optional software, **Matuta 10** is empowered to conduct full spectrum scans in addition to the spectrophotometer standalone functions of photometric measurements and standard curves, that significantly expands its functionalities.



Outstanding stability

All optical components mounted on an 8-mm thick rigid die-cast aluminum base to ensure stability & reliability.



Low running cost

Tungsten lamp and deuterium lamp can be turned ON/OFF individually to extend their service life.



2.5-Inch high-definition LCD display

Clearly and directly presents standard curves and test results.



Flexible configuration

Quick switch between different cuvette / sample holders.

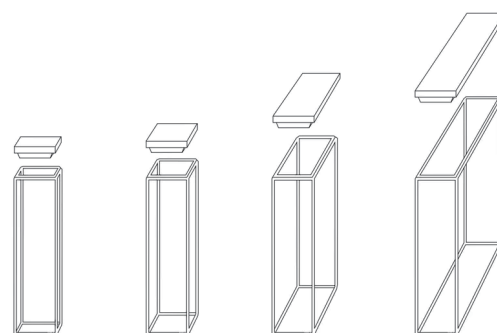


Optional software

Allows further data processing and expansion of applications to such as Wavelength Scan, Multi-wavelength, Kinetics & DNA/Protein.



Matuta 10



Cuvettes of different pathlengths

Matuta 10

Technical Specifications



Model	Matuta 10
Light Source	Tungsten lamp & Deuterium lamp
Wavelength Range	190-1100nm
Wavelength Accuracy	±0.5nm
Wavelength Precision	≤0.2nm
Wavelength Resolution	0.1nm
Spectral Bandwidth	2.0nm
Photometric Range	0-200%T, -0.3-3A, 0-9999C
Photometric Accuracy	±0.3%T
Photometric Precision	≤0.2%T
Stability	±0.002A/h @500nm
Baseline Flatness	±0.002A
Stray Light	≤0.05%T@220nm, 360nm
Detector	Silicon Photodiode
Display	128*64 LCD
Standard Cuvette Holder	10mm 4-position
Power Requirement	AC220V/50Hz or AC110V/60Hz
Dimension (L*W*H)	460*360*225mm
Weight	18kg

Standard Items

- Matuta 10 Spectrophotometer
- Power cord
- Dust cover
- 10mm Glass cuvette (Qty. 4)
- 10mm Quartz cuvette (Qty. 2)
- Manual

Options

Cuvette / Sample Holders

- 50mm / 100mm Universal single-position cuvette holder
- 50mm / 100mm Universal 4-position cuvette holder
- 10mm Universal single-position cuvette holder
- 10mm Universal single-position water jacketed ambient cuvette holder
- Transparent film holder
- Test tube holder

Consumables

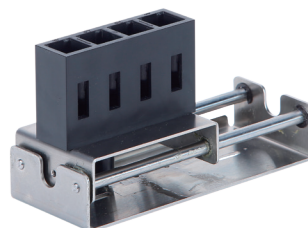
Light Sources

- Deuterium lamp
- Tungsten lamp



Control Units & Attachment

- Peltier system
- Sipper system
- Peltier and sipper system
- Reflectance attachment



Software

